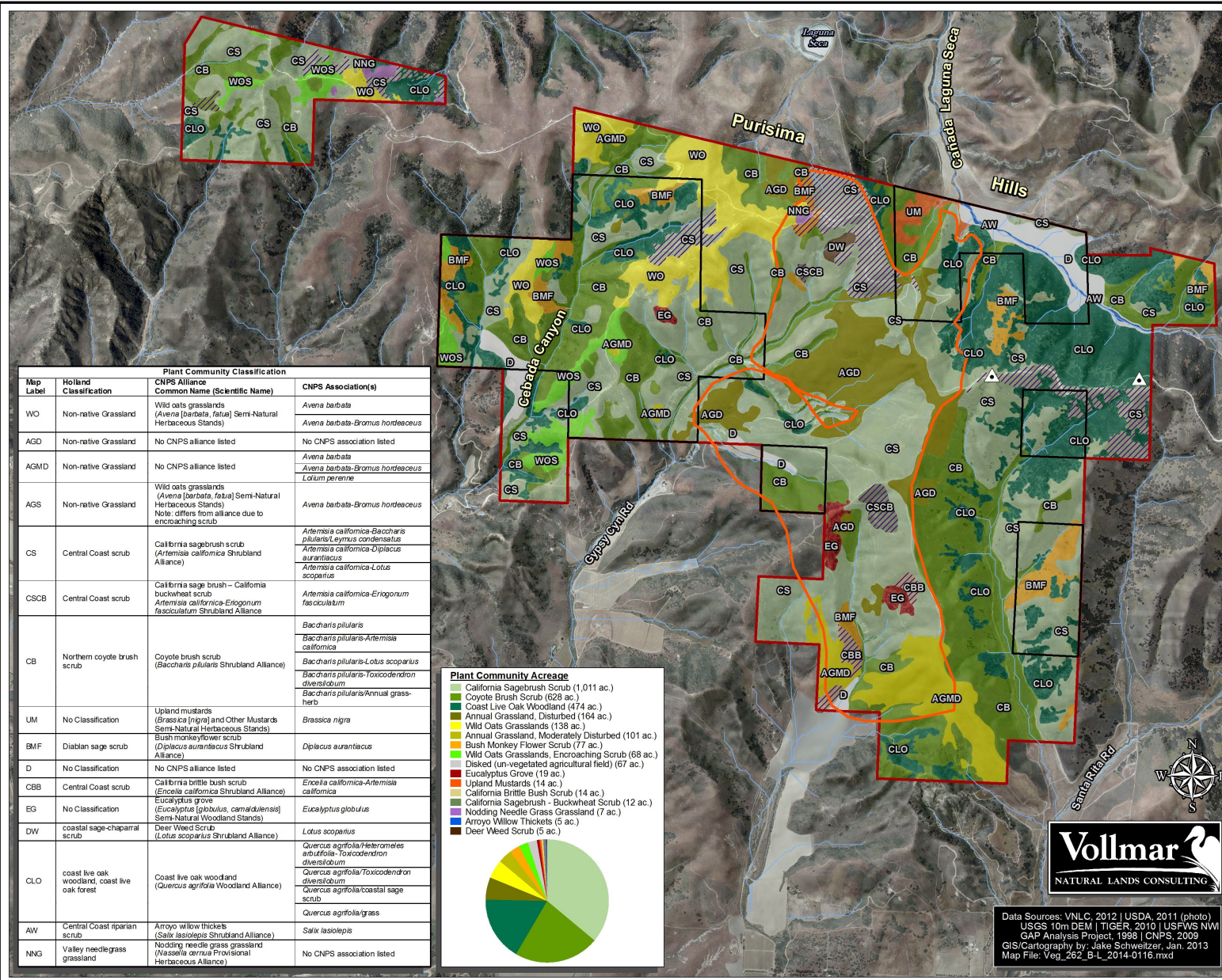
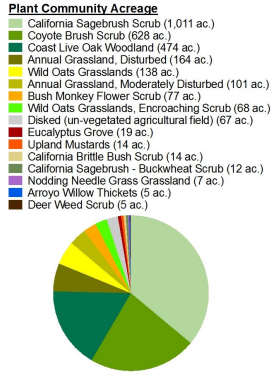


**FIGURE 4**  
**Plant Communities**  
**La Purisima Conservation Bank**  
 Santa Barbara County, California



- Legend**
- Black Flowered Figwort (CRPR/CNPS List 1B.2)
  - La Purisima Ranch Boundary
  - Conservation Bank (853.4 ac.)
  - CDF Prescribed Burn Area (approximate), 1999 - 2001
  - Drainage (produced from USGS DEMs)
  - Road
- Coastal Scrub Habitats**
- California Sagebrush Scrub (CS)
  - Coyote Brush Scrub (CB)
  - Bush Monkey Flower Scrub (BMF)
  - California Brittle Bush Scrub (CBB)
  - California Sagebrush - Buckwheat Scrub (CSCB)
  - Deer Weed Scrub (DW)
  - Area of High Shrub Species Richness (157 ac.)
- Introduced Annual Grassland Habitats**
- Wild Oats Grasslands (WO)
  - Wild Oats Grasslands, Encroaching Scrub (WOS)
- Native Perennial Grassland Habitat**
- Nodding Needle Grass Grassland (NNG)
- Woodland Habitats**
- Coast Live Oak Woodland (CLO)
  - Arroyo Willow Thickets (AW)
- Disturbed Habitats**
- Annual Grassland, Disturbed (previously farmed) (AGD)
  - Annual Grassland, Moderately Disturbed (AGMD)
  - Disked (un-vegetated agricultural field) (D)
  - Eucalyptus Grove (EG)
  - Upland Mustards (UM)
- Note: paniculate tarplant (CRPR List 4.2) is widespread within WO habitat

Map Label	Holland Classification	Plant Community Classification	CNPS Alliance	CNPS Association(s)
WO	Non-native Grassland	Wild oats grasslands ( <i>Avena barbata, fatua</i> ) Semi-Natural Herbaceous Stands		<i>Avena barbata</i>
AGD	Non-native Grassland	No CNPS alliance listed		No CNPS association listed
AGMD	Non-native Grassland	No CNPS alliance listed		<i>Avena barbata</i> <i>Avena barbata-Bromus hordeaceus</i> <i>Lotium perenne</i>
AGS	Non-native Grassland	Wild oats grasslands ( <i>Avena barbata, fatua</i> ) Semi-Natural Herbaceous Stands Note: differs from alliance due to encroaching scrub		<i>Avena barbata-Bromus hordeaceus</i>
CS	Central Coast scrub	California sagebrush scrub ( <i>Artemisia californica</i> Shrubland Alliance)		<i>Artemisia californica-Baccharis pilularis/Lymus condensatus</i> <i>Artemisia californica-Dipilus aurantiacus</i> <i>Artemisia californica-Lotus scoparius</i>
CSCB	Central Coast scrub	California sage brush - California buckwheat scrub ( <i>Artemisia californica-Eriogonum fasciculatum</i> Shrubland Alliance)		<i>Artemisia californica-Eriogonum fasciculatum</i>
CB	Northern coyote brush scrub	Coyote brush scrub ( <i>Baccharis pilularis</i> Shrubland Alliance)		<i>Baccharis pilularis</i> <i>Baccharis pilularis-Artemisia californica</i> <i>Baccharis pilularis-Lotus scoparius</i> <i>Baccharis pilularis-Toxicodendron diversilobum</i> <i>Baccharis pilularis/Annual grass-herb</i>
UM	No Classification	Upland mustards ( <i>Brassica nigra</i> ) and Other Mustards Semi-Natural Herbaceous Stands		<i>Brassica nigra</i>
BMF	Diablan sage scrub	Bush monkeyflower scrub ( <i>Dipilus aurantiacus</i> Shrubland Alliance)		<i>Dipilus aurantiacus</i>
D	No Classification	No CNPS alliance listed		No CNPS association listed
CBB	Central Coast scrub	California brittle bush scrub ( <i>Encelia californica-Artemisia californica</i> Shrubland Alliance)		<i>Encelia californica-Artemisia californica</i>
EG	No Classification	Eucalyptus grove ( <i>Eucalyptus globulus, camaldulensis</i> ) Semi-Natural Woodland Stands		<i>Eucalyptus globulus</i>
DW	coastal sage-chaparral scrub	Deer Weed Scrub ( <i>Lotus scoparius</i> Shrubland Alliance)		<i>Lotus scoparius</i>
CLO	coast live oak woodland, coast live oak forest	Coast live oak woodland ( <i>Quercus agrifolia</i> Woodland Alliance)		<i>Quercus agrifolia/Heteromeles arbutifolia-Toxicodendron diversilobum</i> <i>Quercus agrifolia-Toxicodendron diversilobum</i> <i>Quercus agrifolia/coastal sage scrub</i> <i>Quercus agrifolia/grass</i>
AW	Central Coast riparian scrub	Arroyo willow thickets ( <i>Salix lasiolepis</i> Shrubland Alliance)		<i>Salix lasiolepis</i>
NNG	Valley needle-grass grassland	Nodding needle grass grassland ( <i>Nassella cernua</i> Provisional Herbaceous Alliance)		No CNPS association listed



Data Sources: VNLC, 2012 | USDA, 2011 (photo)  
 USGS 10m DEM | TIGER, 2010 | USFWS NW  
 GAP Analysis Project, 1998 | CNPS, 2006  
 GIS/Cartography by: Jake Schweitzer, Jan. 2013  
 Map File: Veg\_262\_B-L\_2014-0116.mxd

